

LA PORTE COUNTY

REGIONAL SEWER & WATER DISTRICT

OUR MISSION, GOALS, AND PARTNERSHIP

05/22/23



AGENDA

I. Introductions

II. LCRSWD / Community Role

a. Mission

b. Responsibility & Goals

III. Hudson and Saugany Lake Project

a. Project Description / History

b. Purpose and Need

c. Current Status

IV. Request for Support

a. Current Funding Status

b. Maximizing / Leveraging Resources

c. End Goals



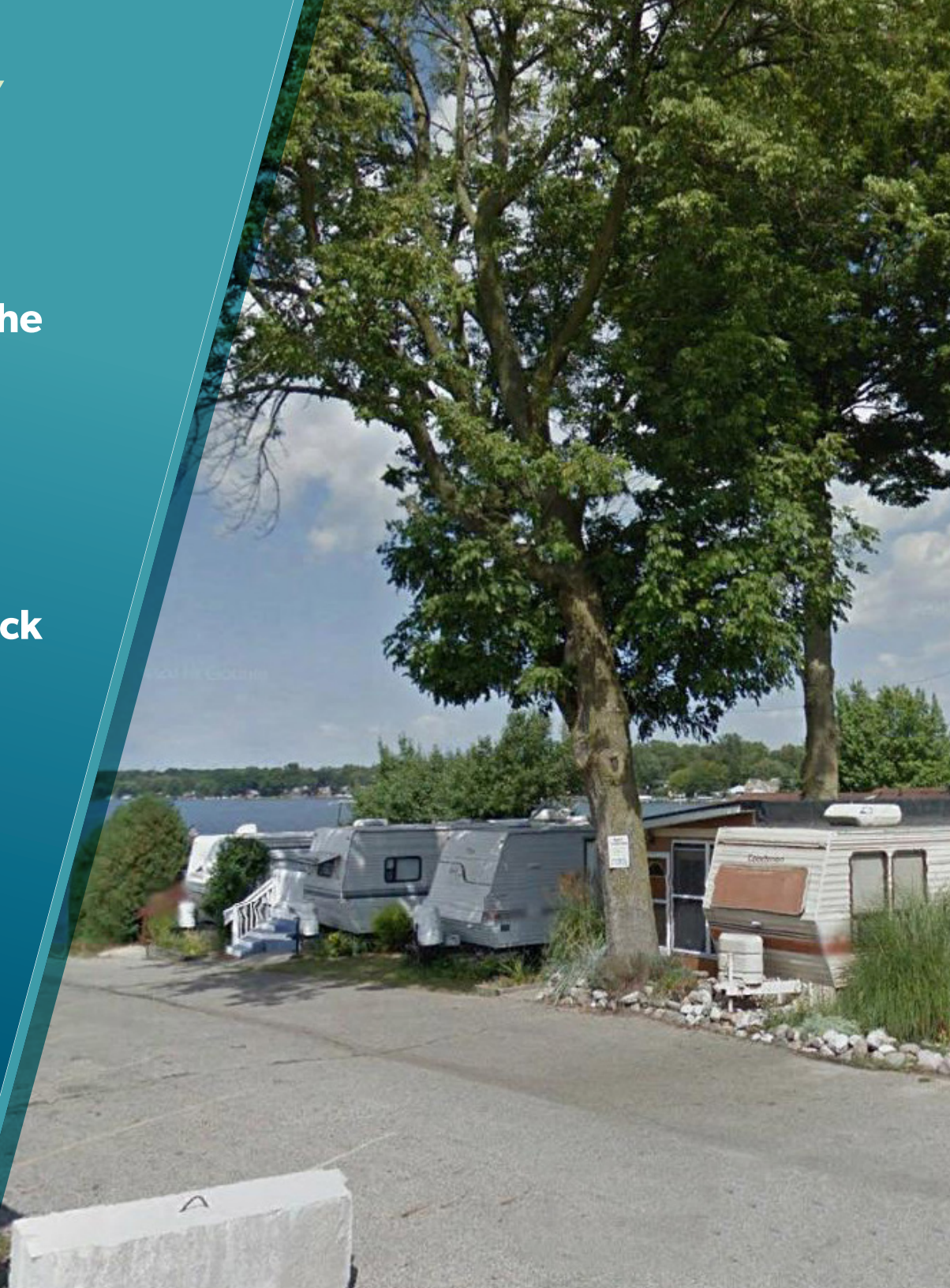
PRIMARY MISSION

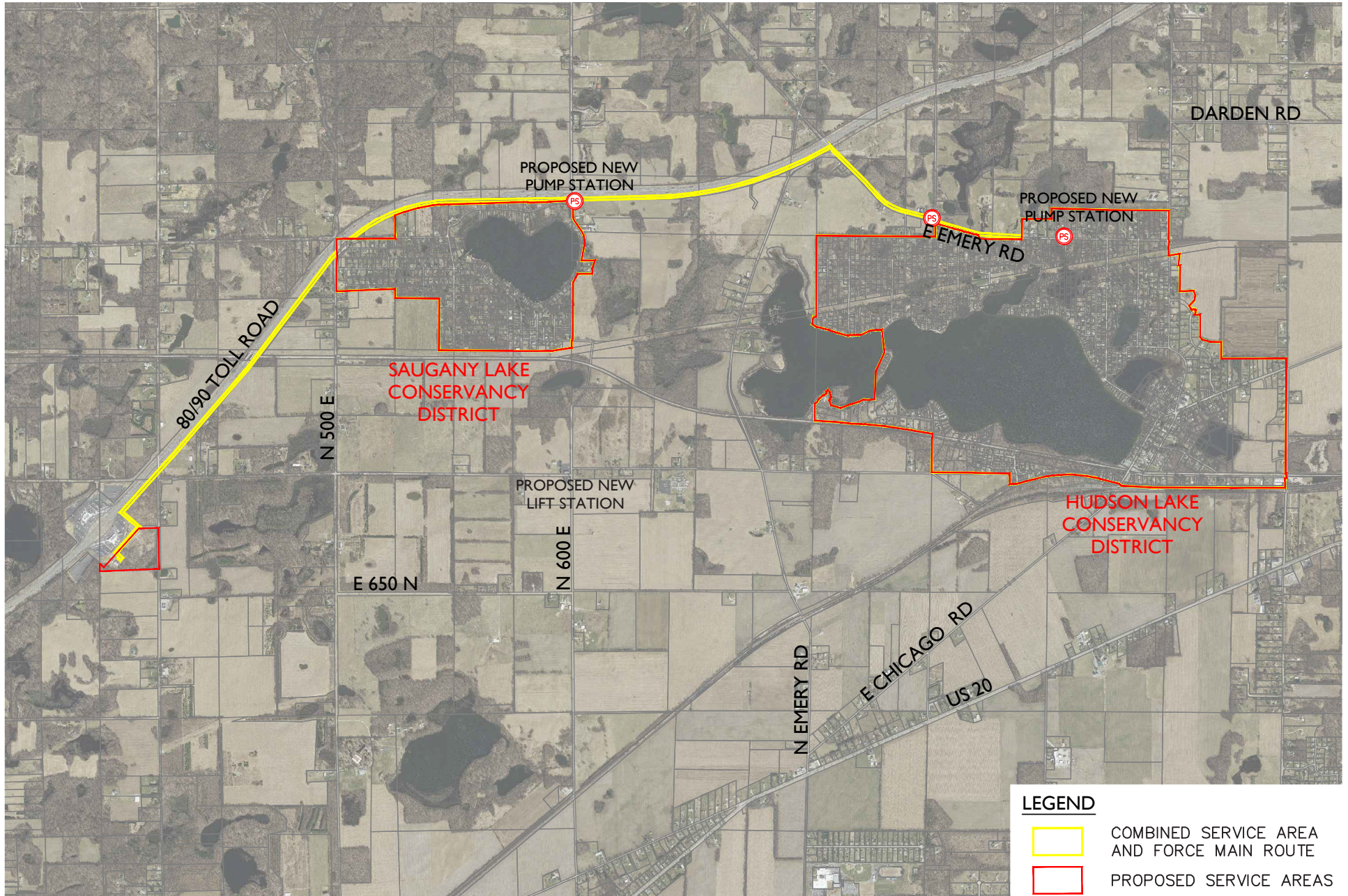
- **Development of rural utility systems in unincorporated areas where need is demonstrated**
- **Protection of health, human, welfare, and the environment**
- **Delivery of services using all available resources reliably, efficiently, and cost effectively**

“Our mission is to enhance the quality of life in La Porte County and protect its waterways and rivers, while providing management of sewage in an environmentally-friendly manner.”

RESPONSIBILITY AND GOALS

- **To react to the critical needs of the unincorporated community**
- **Deliver the most cost-effective solutions**
- **Focus on preservation and sustainability of the housing stock**
- **Provide essential support to redevelopment and economic development in areas of the county remote from municipalities**
- **Enable transitional and generational infrastructure investments**





LEGEND

- COMBINED SERVICE AREA AND FORCE MAIN ROUTE
- PROPOSED SERVICE AREAS

PROJECT AREA

COMMUNITY FACTS - NEED FOR PROJECT

- **Estimated population - 3000 persons**
- **1113 homes and businesses**
- **The majority of home sites are less than county and state standard for use of septic system**
- **30% are less than 10,000 SFT**
- **Most home sites will not support permitting of a septic system replacement or new well**
- **There are less than 100 documented septic systems**
- **The average age of homes in the community is 56 years**
- **Of the documented septic systems the average age is approximately 20 years**
- **The soil conditions within 55% of the project area are unsuitable for septic systems**
- **The local and state health departments advise that the current condition is not sustainable**
- **Of the approximate 282,000 gallons of ground water drawn from homeowners shallow wells, 234,000 gallons are returned to the aquifer through on-site wastewater systems**

PROJECT BENEFITS

ENVIRONMENTAL

- Risk of exposure to human wastewater mitigated
- Impacts to the surface water resource from wastewater are eliminated
- Permanent solution for wastewater collection and treatment
- Elimination of 1100 on-site systems
- Provide for more flexibility on each home site
- Elimination of potential for cross contamination to drinking water wells
- Generational decision that will be transformative for the community

SUPPORT / ENHANCEMENT TO HOUSING STOCK

- Improved property values
- 84% of every dollar spent on housing is direct stimulus locally
- 100 homes at \$350K equals \$29.4M in improved local income. For the same 100 homes assume 431 direct and indirect positions

ECONOMIC IMPACTS

1. Direct and indirect project related jobs - 911 (est.)
2. Indirect jobs (not project related) could reach 2200 positions
3. Wastewater projects spend-out 54% of their expected impact within three years, and 100% within five years (\$43M in direct stimulus)
4. Indirect impact through the “multiplier effect” is typically 1.5 times the project value. Spending by workers, vendors, suppliers and construction companies could reach \$64M in that same period
5. Permanent infrastructure could support development in northeast La Porte County along the NS Railway and U.S. 20. Providing development options for up to 850 acres

Sources: U.S. FHA, Congressional Research Center, United States Conference of Mayors, U.S. Bureau of economic analysis, National Association of Home Builders.

WHAT THE DISTRICT IS DOING TO MANAGE FISCAL MODEL

- Value engineering all aspects of the project
- Negotiating with both funding resources (SRF/USDA)
- Structuring project implementation to maximize subsidization
- Preparing for a “Readi” grant submittal
- Considering a US-EDA application for assistance with the clean water plant improvements





REQUEST FOR PARTNERSHIP

- **Project is estimated at \$43M (up 26% since 2021)**
- **The District is trying to close a \$9+M gap**
- **Increases are attributed to price increases that outpaced inflation, enactment of BABA (Federal requirement to “Buy American, Build American”) and material shortages post COVID-19 worldwide**

The background features several US dollar bills, including a one-dollar bill at the top and a five-dollar bill below it. Two wooden blocks are placed over the bills. The top block has the word "GRANT" in large, bold, black letters. The bottom block has the word "FUND" in large, bold, black letters. A dark teal diagonal shape is on the right side of the image, containing a title and a list of bullet points.

GRANT

FUND

THE "ASK" ...

- **\$1.5M grant from La Porte ARPA funds**
- **Approval of this grant from La Porte County will...**
 1. **Leverage the Districts ability to achieve the highest level of subsidization from Indiana SRF & USDA**
 2. **Leverage our ability to score higher within the Readi Program**
 3. **Demonstrate the importance of proactive planning to protect the County's drinking water supply and valuable natural resources**
 4. **Demonstrate to US-EDA that there is broad support for this critical infrastructure project**
 5. **Help to activate one of the most significant infrastructure improvements in the history of unincorporated La Porte county**